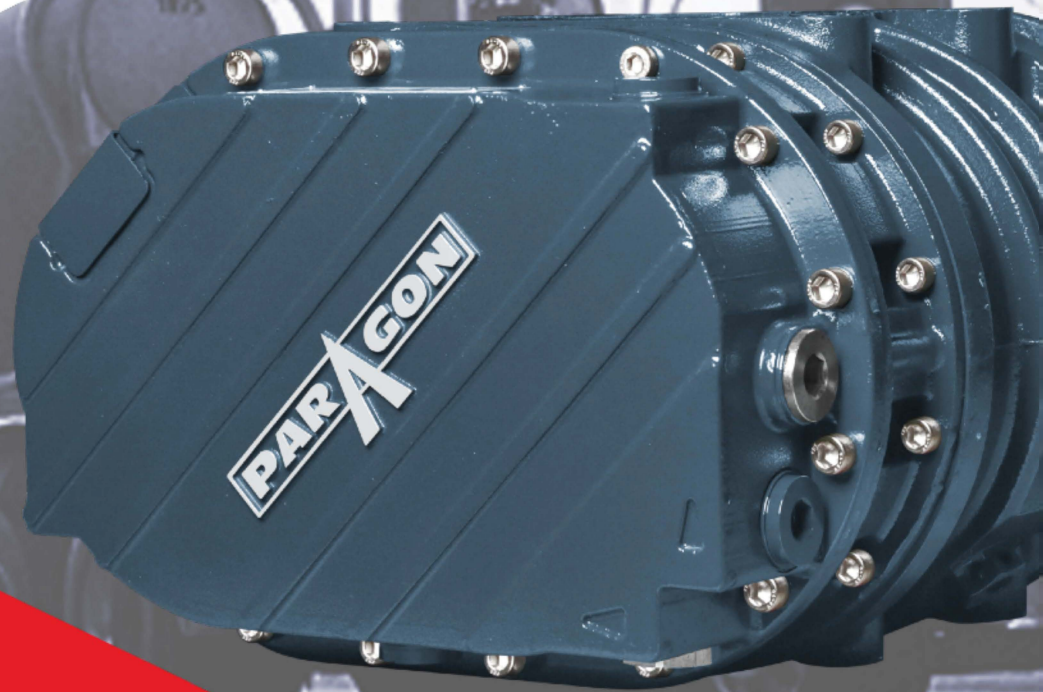


MANSOUR GROUP



# PARAGON TRUCK BLOWERS



*PARAGON TANK TRUCK EQUIPMENT  
BLOWER QUICK REFERENCE GUIDE*

**PARAGON®**

# DRY BULK TANK TRUCK EQUIPMENT OVERVIEW

## 5 IMPORTANT QUESTIONS TO ASK:

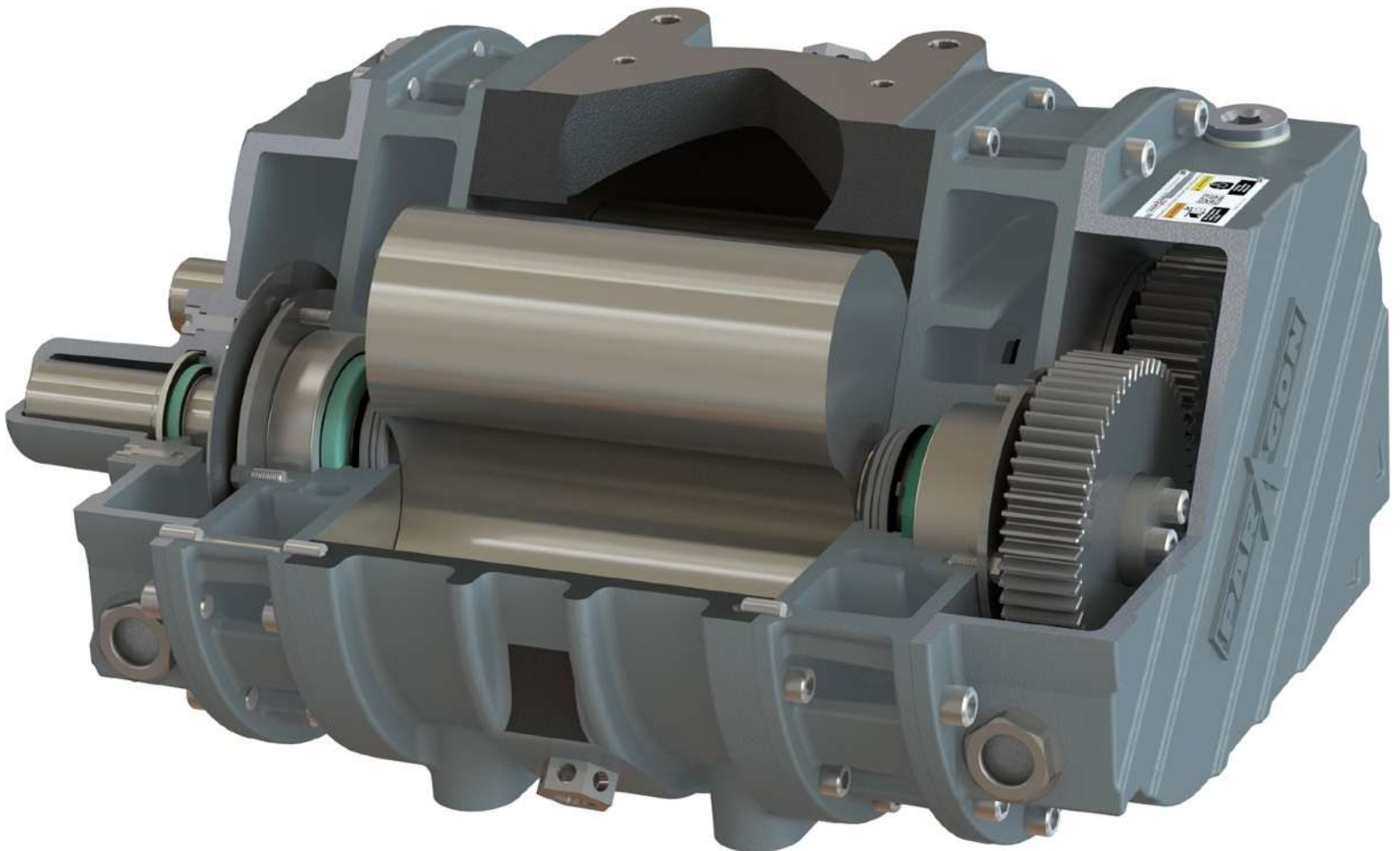
1. WHAT PRODUCT ARE YOU OFFLOADING?
2. WHAT TRANSMISSION MODEL NUMBER DO YOU HAVE?
3. HOW MUCH CLEAN FRAME RAIL DO YOU HAVE ON THE TRUCK?
4. DO YOU CURRENTLY HAVE A PTO? IF SO, WHAT MODEL NUMBER?
5. DO YOU CURRENTLY HAVE A BLOWER? IF SO, WHAT MODEL NUMBER?

## COMPETITOR CROSS REFERENCE:

**PARAGON P657** | Gardner Denver T5CDL9 | Tuthill 855RS | Tuthill T650 | DRUM HPD450 (1600 RPM SHAFT SPEED RECOMMENDED)

**PARAGON P858** | Paragon P857 | Tuthill 855RS | Drum D807 | Tuthill T855 (1800 - 2100 RPM SHAFT SPEED RECOMMENDED)

**PARAGON P1057** | Drum D907 | Tuthill T1055 | Gardner Denver T5CDL12/L92 (1800 - 1900 RPM SHAFT SPEED RECOMMENDED)



# COMMON BLOWER KIT SETUPS



**P657 - 600 CFM BLOWER**

**PRODUCTS:**

Category # 1

**COMPS:**

Gardner Denver CDL9  
Tuthill T650  
Drum D450



**P858 - 1040 CFM BLOWER**

**PRODUCTS:**

Category # 2 & 4

**COMPS:**

Gardner Denver CDL12  
Tuthill T850/855  
Drum D807



**P1057 - 1300 CFM BLOWER**

**PRODUCTS:**

Category # 3 & 4

**COMPS:**

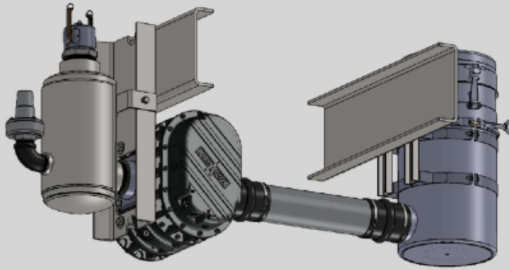
Gardner Denver CDL12L92  
Tuthill T1050/T1055  
Drum D907

**PRODUCT CATEGORIES:**

- |   |  |
|---|--|
| 1. <b>Pulverants and Powders</b><br>Cement<br>Flyash<br>Hydrated Lime<br>Starch<br>Flour        | 3. * <b>Pebble - 1/32" and up</b><br>Plastic Pellets<br>Rock Salt<br>Dolomite<br>Limestone   |
| 2. * <b>Granular - up to 1/32" dia.</b><br>Sugar<br>Salt, table<br>Sand<br>Pulverized Limestone | 4. * <b>Feeds - all sizes</b><br>Corn<br>Soy Beans<br>Rice<br>Rice Grits<br>Pelletized Feeds |

\* Any Food Grade Product Requires Stainless Accessories

## HORIZONTAL SETUP - REQUIRES 18" OF FRAME RAIL ON 2 SIDES



**P657 BLOWER KIT**

- (1) 601-014 - BLOWER
- (1) 623-029 (DS) OR -030 (PS) MOUNTING BRACKET KIT
- (1) 628-053 (STEEL) OR -058 (SS) SILENCER KIT
- (1) 623-022 - FILTER BRACKET
- (1) 625-045 - FILTER KIT OR 625-054 - PRECLEANER

**P858 BLOWER KIT**

- (1) 601-017 - BLOWER
- (1) 623-038 (DS) OR -039 (PS) MOUNTING BRACKET KIT
- (1) 628-017 (STEEL) OR -091 (SS) SILENCER KIT
- (1) 623-022 - FILTER BRACKET
- (1) 625-020 - FILTER KIT OR 625-008 - PRECLEANER

**P1057 BLOWER KIT**

- (1) 601-016 - BLOWER
- (1) 623-038 (DS) OR -039 (PS) MOUNTING BRACKET KIT
- (1) 628-017 (STEEL) OR -091 (SS) SILENCER KIT
- (1) 623-022 - FILTER BRACKET
- (1) 625-020 - FILTER KIT OR 625-008 - PRECLEANER

ADDITIONAL KITS AVAILABLE / COMMON KITS LISTED ABOVE

## HORIZONTAL ADJACENT SETUP - REQUIRES 30" OF FRAME RAIL ON 1 SIDE

**P657 BLOWER KIT**

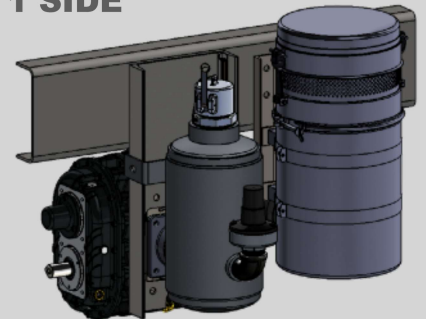
- (1) 601-014 - BLOWER
- (1) 623-029 (DS) OR -030 (PS) MOUNTING BRACKET KIT
- (1) 628-053 (STEEL) OR -058 (SS) SILENCER KIT
- (1) 623-022 - FILTER BRACKET
- (1) 625-044 - FILTER KIT  
NO PRECLEANER AVAILABLE

**P858 BLOWER KIT**

- (1) 601-017 - BLOWER
- (1) 623-038 (DS) OR -039 (PS) MOUNTING BRACKET KIT
- (1) 628-017 (STEEL) OR -091 (SS) SILENCER KIT
- (1) 623-022 - FILTER BRACKET
- (1) 625-018 - FILTER KIT OR S0711145 - PRECLEANER

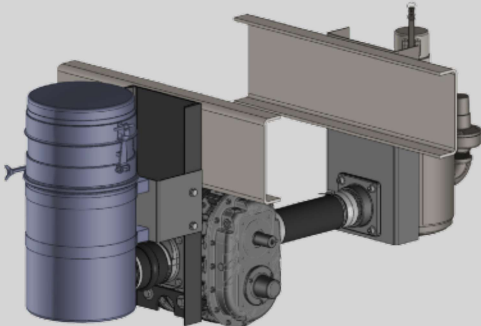
**P1057 BLOWER KIT**

- (1) 601-016 - BLOWER
- (1) 623-038 (DS) OR -039 (PS) MOUNTING BRACKET KIT
- (1) 628-017 (STEEL) OR -091 (SS) SILENCER KIT
- (1) 623-022 - FILTER BRACKET
- (1) 625-018 - FILTER KIT OR S0711145 - PRECLEANER



ADDITIONAL KITS AVAILABLE / COMMON KITS LISTED ABOVE

## REMOTE HORIZONTAL SETUP - REQUIRES 18" OF FRAME RAIL ON 2 SIDES



**P657 BLOWER KIT**

- (1) 601-014 - BLOWER
- (1) 623-029 (DS) OR -030 (PS) MOUNTING BRACKET KIT
- (1) 628-103 (STEEL) OR -104 (SS) SILENCER KIT
- (1) 625-055 - FILTER KIT

**P858 BLOWER KIT**

- (1) 601-017 - BLOWER
- (1) 623-038 (DS) OR -039 (PS) MOUNTING BRACKET KIT
- (1) 628-092 (STEEL) OR -089 (SS) SILENCER KIT
- (1) 625-013 - FILTER KIT

**P1057 BLOWER KIT**

- (1) 601-016 - BLOWER
- (1) 623-038 (DS) OR -039 (PS) MOUNTING BRACKET KIT
- (1) 628-092 (STEEL) OR -089 (SS) SILENCER KIT
- (1) 625-013 - FILTER KIT

ADDITIONAL KITS AVAILABLE / COMMON KITS LISTED ABOVE. | NO PRECLEANER OPTION AVAILABLE

## VERTICAL SETUP - REQUIRES 18" OF FRAME RAIL ON 1 SIDE

**P657 BLOWER KIT**

- (1) 601-014 - BLOWER
- (1) 623-037 MOUNTING BRACKET KIT
- (1) 628-062 (STEEL) OR -097 (SS) SILENCER KIT
- (1) 625-043 - FILTER KIT OR 625-053 - PRECLEANER

**P858 BLOWER KIT**

- (1) 601-017 - BLOWER
- (1) 623-041 MOUNTING BRACKET KIT
- (1) 628-024 (STEEL) OR -101 (SS) SILENCER KIT
- (1) 625-022 - FILTER KIT OR 625-016 - PRECLEANER

**P1057 BLOWER KIT**

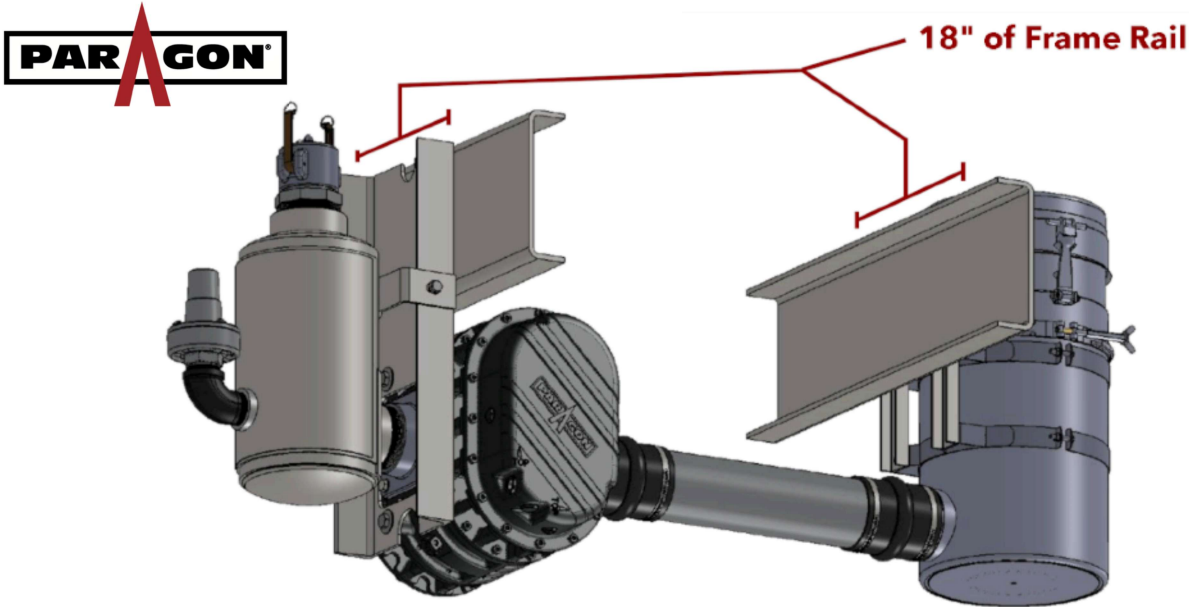
- (1) 601-016 - BLOWER
- (1) 623-041 MOUNTING BRACKET KIT
- (1) 628-024 (STEEL) OR 101 (SS) SILENCER KIT
- (1) 625-022 - FILTER KIT OR 625-016 - PRECLEANER



ADDITIONAL KITS AVAILABLE / COMMON KITS LISTED ABOVE

# HORIZONTAL SETUP - 18" OF FRAME RAIL ON 2 SIDES

ADDITIONAL KITS AVAILABLE / COMMON KITS LISTED ON THE RIGHT ->



Approx. Shipping Weight:  
Approx. Shipping Dims:

640 lbs [290 kg]  
1 Pallet @ 40Wx48Lx48H

297 Lbs [134 kg] : Bare P657 Weight  
366 Lbs [166 kg] : Bare P858 Weight  
419 Lbs [190 kg] : Bare P1057 Weight

## P657 BLOWER KIT

- (1) 601-014 - BLOWER
- (1) 623-029 (DS) OR -030 (PS) MOUNTING BRACKET KIT
- (1) 628-053 (STEEL) OR -058 (SS) SILENCER KIT
- (1) 623-022 - FILTER BRACKET
- (1) 625-045 - FILTER KIT OR 625-054 - PRECLEANER

## P858 BLOWER KIT

- (1) 601-017 - BLOWER
- (1) 623-038 (DS) OR -039 (PS) MOUNTING BRACKET KIT
- (1) 628-017 (STEEL) OR -091 (SS) SILENCER KIT
- (1) 623-022 - FILTER BRACKET
- (1) 625-020 - FILTER KIT OR 625-008 - PRECLEANER

## P1057 BLOWER KIT

- (1) 601-016 - BLOWER
- (1) 623-038 (DS) OR -039 (PS) MOUNTING BRACKET KIT
- (1) 628-017 (STEEL) OR -091 (SS) SILENCER KIT
- (1) 623-022 - FILTER BRACKET
- (1) 625-020 - FILTER KIT OR 625-008 - PRECLEANER



## KEY BLOWER TIPS FOR BETTER OPERATION

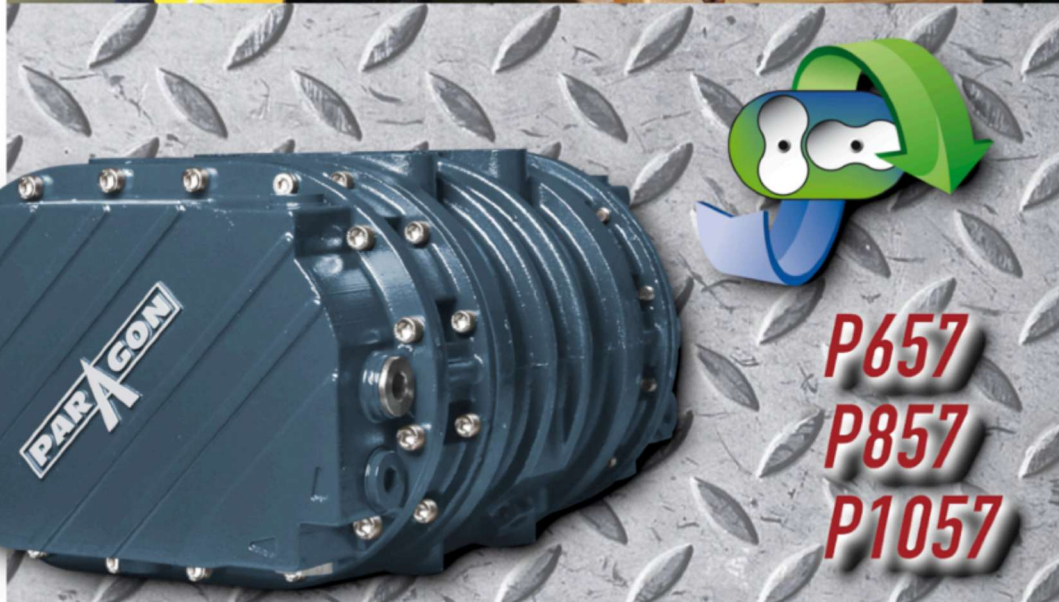
- NEVER UNDERSPEED THE TRUCK BLOWER
  - P657 (1000 RPM MIN / DRIVE SHAFT SPEED)
  - P857 (1800 RPM MIN / DRIVE SHAFT SPEED)
  - P1057 (1700 RPM MIN / DRIVE SHAFT SPEED)
- INSPECT THE CHECK VALVE EVERY THREE MONTHS
- SERVICE YOUR TRUCK BLOWER AT THE CORRECT TIME

### General

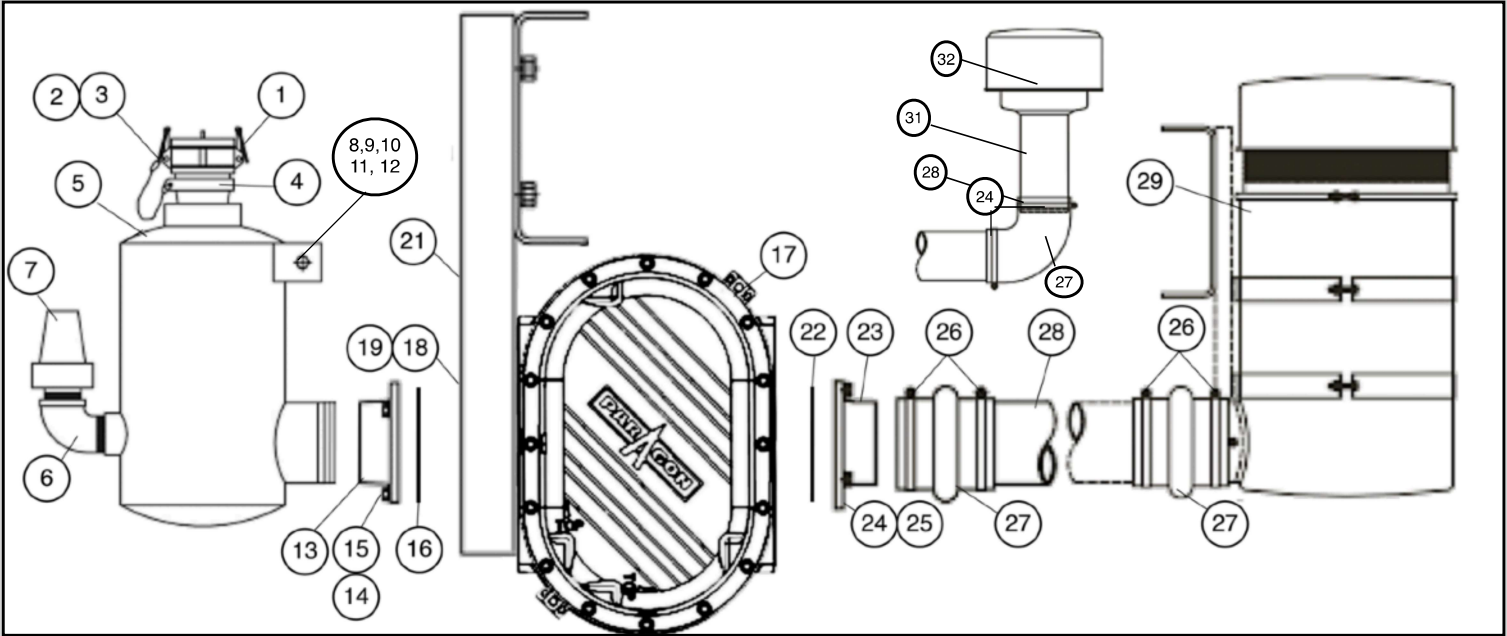
- Inspect blower oil and change if necessary.
- Inspect Driveline Components

### Air Filtration System

- Change Air Filter Element



# HORIZONTAL SETUP PARTS BREAKDOWN



Item#	Qty	Part#	Description
<b>SILENCER</b>			
1	1	565-001	Camlock dustcap 3" Aluminum
2	1	582-002	Wire rope
3	2	582-003	Sleeve
4	1	567-002	Camlock 3" male x 4" npt Aluminum
5	1	563-006	Muffler, 4" Steel MNPT x 4" FNPT 1/2" Plug
5	1	563-010	Muffler, 4" SS MNPT x 4" FNPT w/ Temp Gauge
6	1	533-005	Elbow, 2" Street
7	1	610-012	Relief Valve, 2" FNPT - 16 psi Paragon
7	1	610-013	Relief Valve, 2" FNPT - 18 psi Paragon
7	1	610-014	Relief Valve, 2" FNPT - 20 psi Paragon
8	2	294-010	Washer Lock (Not Shown)
9	2	296-010	Washer Flat (Not Shown)
10	2	284-000	Nut Hex (Not Shown)
11	2	293-004	Washer Beveled 1/2" (Not Shown)
12	2	228-074	Capscrew Hex Hd (Not Shown)
13	1	509-031	Flange, Delivery Cl, HA - P657
13	1	509-001	Flange, Delivery Cl, HA - P858 / P1057
14	4	196-008	Flange, HA - P858 / P1057; Washer Flat
15	4	128-025	Flange, HA - P858 / P1057; Capscrew Hex Hd
16	1	526-002	Flange, HA - P858 / P1057; Gasket
15	4	224-023	Flange, HA - P657; Capscrew Hex Hd
16	1	526-036	Flange, HA - P657; Gasket
<b>FILTER MOUNT</b>			
33	4	228-052	Capscrew Hex Hd Gr5 3/8-16 X 1-1/4 Pl
34	4	284-006	Washer Flat 3/8", SS (Not Shown)
35	4	284-009	Nut Hex Gr5 3/8-16 NylCK
36	4	294-009	Washer LCK 3/8" (Not Shown)
37	4	296-022	Washer Flat 3/8" (Not Shown)
38	1	508-058	Paragon Filter Bracket

Item#	Qty	Part#	Description
<b>BLOWER</b>			
17	1	601-014	Blower, P657
17	1	601-016	Blower, P1057
17	1	601-017	Blower, P858
18	4	128-037	Capscrew Hex Hd
19	4	194-007	Washer, Lock
20	1	560-039	Coupler Flange K1350/1410 P657/P858/P1057 (Not Shown)
20	1	560-044	Coupler Flange K1300 P657/P858/P1057 (Not Shown)
<b>MOUNTING</b>			
21	1	508-113	P657; Mounting 2.5 deg Driver Side
21	1	508-114	P657; Mounting 2.5 deg Pass Side
21	1	508-025	P858/P1057; Mounting 2.5 deg Driver Side
21	1	508-061	P858/P1057; Mounting 2.5 deg Pass Side
<b>FILTER</b>			
22	1	526-036	Flange, HA - P657; Gasket
22	1	526-002	Flange, HA - P858/P1057; Gasket
23	1	509-032	Flange, HA - P657; Suction Alum
23	1	509-002	Flange, HA - P858/P1057; Suction Alum
23	4	228-070	Flange, HA - P657; Capscrew Hex Hd
24	4	128-025	Flange, HA - P858/P1057; Capscrew Hex Hd
25	4	196-008	Flange, HA - P858/P1057; Washer Flat
26	4	291-012	Hose Clamp 4" - 6"
27	2	587-002	Hump Hose - 5"
28	1	588-002	Suction Pipe 5" x 20" Al
29	1	625-002	Filter Assy S/S PSI/VAC
30	2	16939	Pipe Clamps 5" (NOT SHOWN)
31	1	16941	Reducer 5" x 6"
32	1	16938	Pre-Cleaner - 6"



**P657**

#621-014 - Side Outlet Service Kit  
#621-016 - Side Outlet Service Kit  
(Includes 2 Melt Plugs)  
#621-015 - Bottom Outlet Service Kit  
#621-017 - Bottom Outlet Service Kit  
(Includes 2 Melt Plugs)



**P858/P1057**

#621-055 - Side Outlet Service Kit  
#621-057 - Side Outlet Service Kit  
(Includes 2 Melt Plugs)  
#621-056 - Bottom Outlet Service Kit  
#621-058 - Bottom Outlet Service Kit  
(Includes 2 Melt Plugs)

## Air Filtration System

- Change Air Filter Element Every 6 Months

## Lubrication System

- Change the Lobe Blower Oil Every 6 Months

- P657/P857 - #409-007 - Synthetic Blower Oil

- P1057 - #409-002 - Synthetic Blower Oil

Recommended Blower Oil:

Mobil SHC 630 for P657/P857 & Mobil SHC 627 for P1057

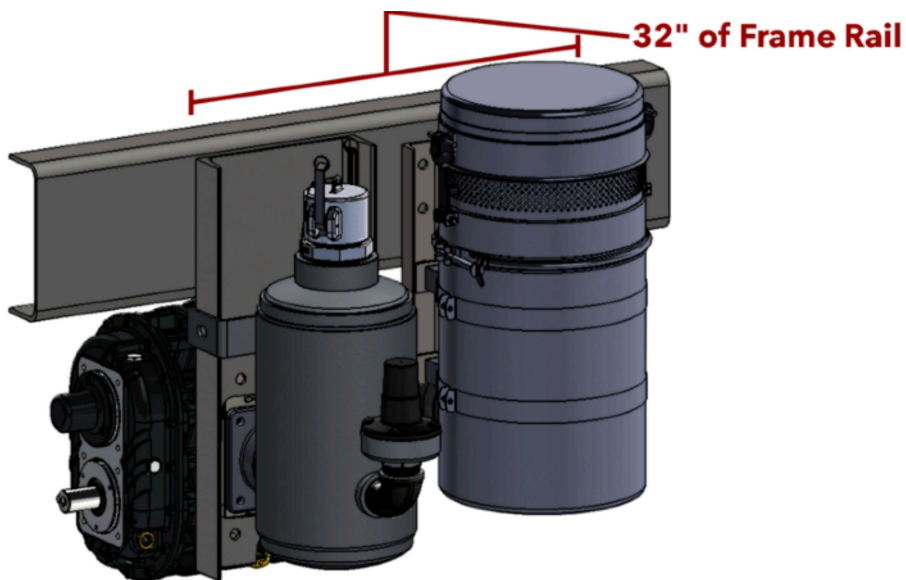
## Melt Plug Inspection

- Inspect Blower for Blown Melt Plugs is Recommended



# HORIZONTAL ADJACENT SETUP - 32" OF FRAME RAIL ON 1 SIDE

ADDITIONAL KITS AVAILABLE / COMMON KITS LISTED ON THE RIGHT ->



Approx. Shipping Weight:  
Approx. Shipping Dims:

670 lbs [290 kg]  
1 Pallet @ 40Wx48Lx48H

297 Lbs [134 kg] : Bare P657 Weight  
366 Lbs [166 kg] : Bare P858 Weight  
419 Lbs [190 kg] : Bare P1057 Weight

## P657 BLOWER KIT

- (1) 601-014 - BLOWER
- (1) 623-029 (DS) OR -030 (PS) MOUNTING BRACKET KIT
- (1) 628-053 (STEEL) OR -058 (SS) SILENCER KIT
- (1) 623-022 - FILTER BRACKET
- (1) 625-044 - FILTER KIT  
NO PRECLEANER AVAILABLE

## P858 BLOWER KIT

- (1) 601-017 - BLOWER
- (1) 623-038 (DS) OR -039 (PS) MOUNTING BRACKET KIT
- (1) 628-017 (STEEL) OR -091 (SS) SILENCER KIT
- (1) 623-022 - FILTER BRACKET
- (1) 625-018 - FILTER KIT OR S0711145 - PRECLEANER

## P1057 BLOWER KIT

- (1) 601-016 - BLOWER
- (1) 623-038 (DS) OR -039 (PS) MOUNTING BRACKET KIT
- (1) 628-017 (STEEL) OR -091 (SS) SILENCER KIT
- (1) 623-022 - FILTER BRACKET
- (1) 625-018 - FILTER KIT OR S0711145 - PRECLEANER



## KEY BLOWER TIPS FOR BETTER OPERATION

- NEVER UNDERSPEED THE TRUCK BLOWER
  - P657 (1000 RPM MIN / DRIVE SHAFT SPEED)
  - P857 (1800 RPM MIN / DRIVE SHAFT SPEED)
  - P1057 (1700 RPM MIN / DRIVE SHAFT SPEED)
- INSPECT THE CHECK VALVE EVERY THREE MONTHS
- SERVICE YOUR TRUCK BLOWER AT THE CORRECT TIME

### General

- Inspect blower oil and change if necessary.
- Inspect Driveline Components

### Air Filtration System

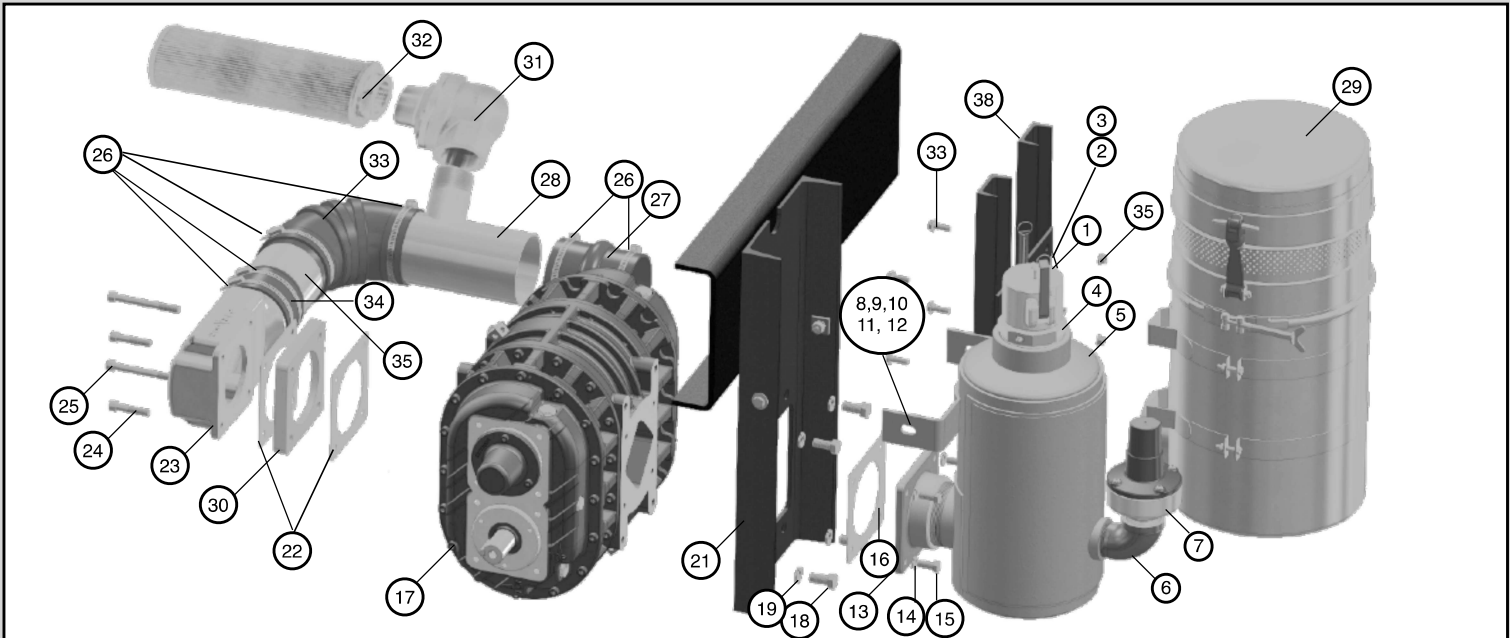
- Change Air Filter Element



**P657**  
**P857**  
**P1057**

# HORIZONTAL ADJACENT SETUP

## PARTS BREAKDOWN



Item#	Qty	Part#	Description
<b>SILENCER</b>			
1	1	565-001	Camlock dustcap 3" Aluminum
2	1	582-002	Wire rope
3	2	582-003	Sleeve
4	1	567-002	Camlock 3" male x 4" npt Aluminum
5	1	563-006	Muffler, 4" Steel MNPT x 4" FNPT 1/2" Plug
5	1	563-010	Muffler, 4" SS MNPT x 4" FNPT w/ Temp Gauge
6	1	533-005	Elbow, 2" Street
7	1	610-012	Relief Valve, 2" FNPT - 16 psi Paragon
7	1	610-013	Relief Valve, 2" FNPT - 18 psi Paragon
7	1	610-014	Relief Valve, 2" FNPT - 20 psi Paragon
8	2	294-010	Washer Lock (Not Shown)
9	2	296-010	Washer Flat (Not Shown)
10	2	284-000	Nut Hex (Not Shown)
11	2	293-004	Washer Beveled 1/2" (Not Shown)
12	2	228-074	Capscrew Hex Hd (Not Shown)
13	1	509-031	Flange, Delivery Cl, HA - P657
13	1	509-001	Flange, Delivery Cl, HA - P858 / P1057
14	4	196-008	Flange, HA - P858 / P1057; Washer Flat
15	4	128-025	Flange, HA - P858 / P1057; Capscrew Hex Hd
16	1	526-002	Flange, HA - P858 / P1057; Gasket
15	4	224-023	Flange, HA - P657; Capscrew Hex Hd
16	1	526-036	Flange, HA - P657; Gasket
<b>FILTER MOUNT</b>			
33	4	228-052	Capscrew Hex Hd Gr5 3/8-16 X 1-1/4 Pl
34	4	284-006	Washer Flat 3/8", SS (Not Shown)
35	4	284-009	Nut Hex Gr5 3/8-16 NylCK
36	4	294-009	Washer LCK 3/8" (Not Shown)
37	4	296-022	Washer Flat 3/8" (Not Shown)
38	1	508-058	Paragon Filter Bracket

Item#	Qty	Part#	Description
<b>BLOWER</b>			
17	1	601-014	Blower, P657
17	1	601-016	Blower, P1057
17	1	601-017	Blower, P858
18	4	128-037	Capscrew Hex Hd
19	4	194-007	Washer, Lock
20	1	560-039	Coupler Flange K1350/1410 P657/P858/P1057 (Not Shown)
20	1	560-044	Coupler Flange K1300 P657/P858/P1057 (Not Shown)
<b>MOUNTING</b>			
21	1	508-113	P657; Mounting 2.5 deg Driver Side
21	1	508-114	P657; Mounting 2.5 deg Pass Side
21	1	508-025	P858/P1057; Mounting 2.5 deg Driver Side
21	1	508-061	P858/P1057; Mounting 2.5 deg Pass Side
<b>FILTER</b>			
22	1	526-036	Flange, HA - P657; Gasket
22	1	526-002	Flange, HA - P858/P1057; Gasket
23	1	509-034	Flange, HAA - P657; Suction Alum
23	1	509-005	Flange, HAA - P858/P1057; Suction Alum
24	4	228-070	Flange, HA - P657; Capscrew Hex Hd
24	2	124-021	Flange, HAA - P858/P1057; Socket Hex Hd 55mm
25	2	124-025	Flange, HAA - P858/P1057; Socket Hex Hd 110mm
26	6	291-012	Hose Clamp 4" - 6"
27	1	587-000	P657; Hump Hose - 4" x 5"
27	1	587-002	P858/P1057; Hump Hose - 5"
28	1	588-011	P657; Tube 4D x 6L
28	1	588-009	P858/P1057; Tube 5D x 20L w/ 2 NPTM Nipple
29	1	625-006	P657; Filter Assy S/S PSI Only
29	1	625-002	P858/P1057; Filter Assy S/S PSI/VAC
30	1	571-019	P858/P1057; Spacer 1 Inch Thick
31	1	815-000	P858/P1057; R/V Vac 15hg Vac, 2 FNPT
32	1	625-025	P858/P1057; Filter Vacuum RV
33	1	587-013	P858/P1057; 5" Reinced Rubber ELB Assy
34	1	587-005	P858/P1057; Hose, 3-1/2 lg x 5 ID EPDM
35	1	588-012	P657; Tube 4D x 2.5L
35	1	588-002	P858/P1057; 5" Alum Tube



**P657**

#621-014 - Side Outlet Service Kit  
 #621-016 - Side Outlet Service Kit  
(Includes 2 Melt Plugs)  
 #621-015 - Bottom Outlet Service Kit  
 #621-017 - Bottom Outlet Service Kit  
(Includes 2 Melt Plugs)



**P858 / P1057**

#621-055 - Side Outlet Service Kit  
 #621-057 - Side Outlet Service Kit  
(Includes 2 Melt Plugs)  
 #621-056 - Bottom Outlet Service Kit  
 #621-058 - Bottom Outlet Service Kit  
(Includes 2 Melt Plugs)

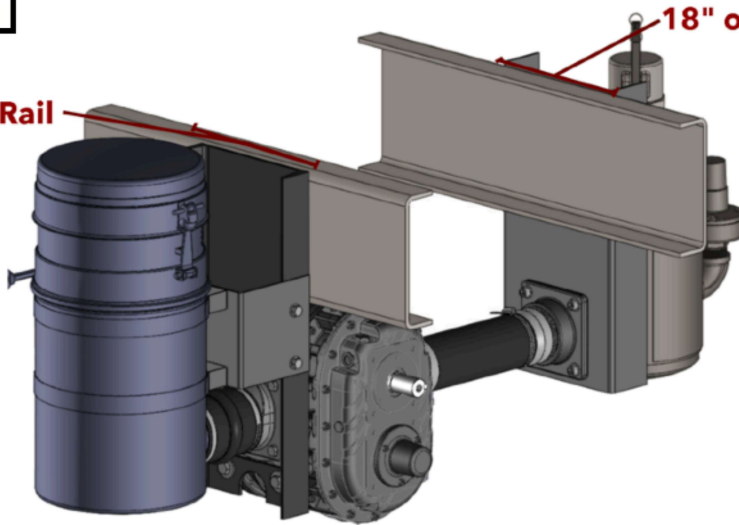


# REMOTE HA SETUP - REQUIRES 18" OF FRAME RAIL ON 2 SIDES

ADDITIONAL KITS AVAILABLE / COMMON KITS LISTED ON THE RIGHT ->



18" of Frame Rail



18" of Frame Rail

Approx. Shipping Weight:  
Approx. Shipping Dims:

690 lbs [312 kg]  
1 Pallet @ 40Wx48Lx48H

297 Lbs [134 kg] : Bare P657 Weight  
366 Lbs [166 kg] : Bare P858 Weight  
419 Lbs [190 kg] : Bare P1057 Weight

## P657 BLOWER KIT

- (1) 601-014 - BLOWER
- (1) 623-029 (DS) OR -030 (PS) MOUNTING BRACKET KIT
- (1) 628-103 (STEEL) OR -104 (SS) SILENCER KIT
- (1) 625-055 - FILTER KIT

## P858 BLOWER KIT

- (1) 601-017 - BLOWER
- (1) 623-038 (DS) OR -039 (PS) MOUNTING BRACKET KIT
- (1) 628-092 (STEEL) OR -089 (SS) SILENCER KIT
- (1) 625-013 - FILTER KIT

## P1057 BLOWER KIT

- (1) 601-016 - BLOWER
- (1) 623-038 (DS) OR -039 (PS) MOUNTING BRACKET KIT
- (1) 628-092 (STEEL) OR -089 (SS) SILENCER KIT
- (1) 625-013 - FILTER KIT



## KEY BLOWER TIPS FOR BETTER OPERATION

- NEVER UNDERSPEED THE TRUCK BLOWER
  - P657 (1000 RPM MIN / DRIVE SHAFT SPEED)
  - P857 (1800 RPM MIN / DRIVE SHAFT SPEED)
  - P1057 (1700 RPM MIN / DRIVE SHAFT SPEED)
- INSPECT THE CHECK VALVE EVERY THREE MONTHS
- SERVICE YOUR TRUCK BLOWER AT THE CORRECT TIME

### General

- Inspect blower oil and change if necessary.
- Inspect Driveline Components

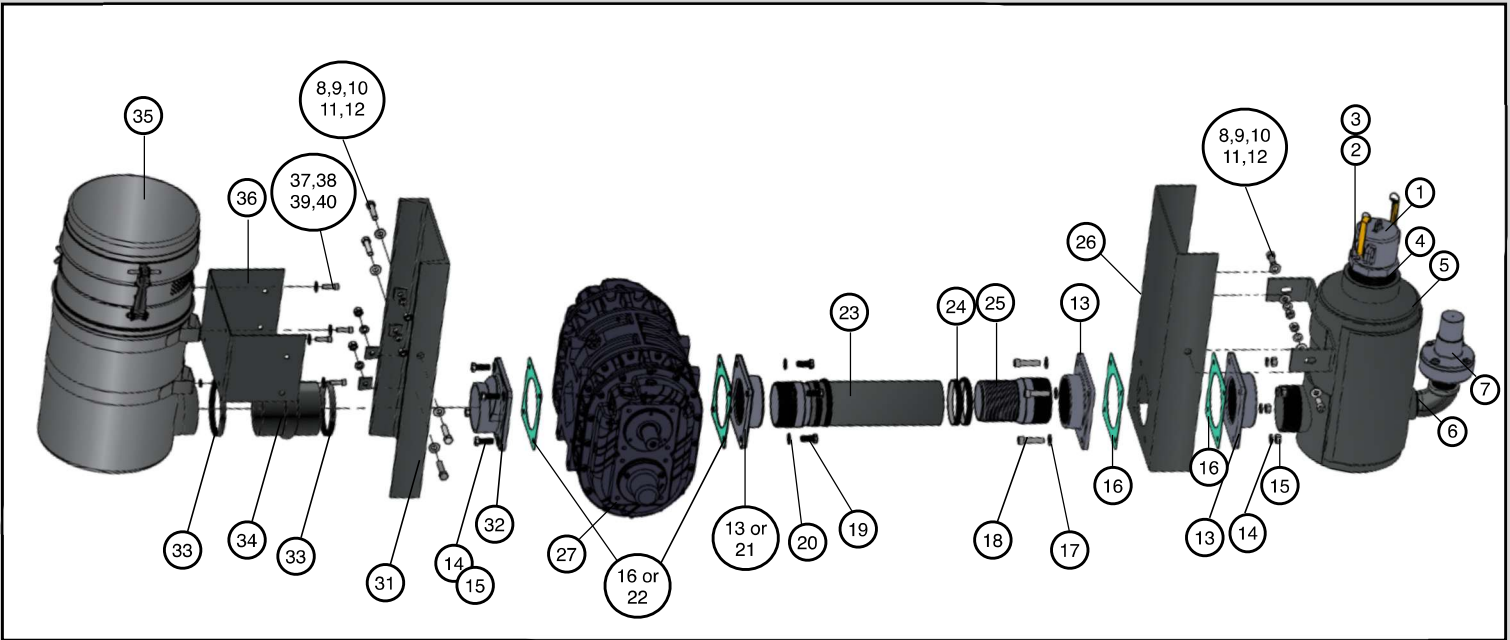
### Air Filtration System

- Change Air Filter Element



P657  
P857  
P1057

# REMOTE HA SETUP PARTS BREAKDOWN



Item#	Qty	Part#	Description
<b>REMOTE SILENCER</b>			
1	1	565-001	Camlock dustcap 3" Aluminum
2	1	582-002	Wire rope
3	2	582-003	Sleeve
4	1	567-002	Camlock 3" male x 4" npt Aluminum
5	1	563-006	Muffler, 4" Steel MNPT x 4" FNPT 1/2" Plug
5	1	563-010	Muffler, 4" SS MNPT x 4" FNPT w/ Temp Gauge
6	1	533-005	Elbow, 2" Street
7	1	610-012	Relief Valve, 2" FNPT - 16 psi Paragon
7	1	610-013	Relief Valve, 2" FNPT - 18 psi Paragon
7	1	610-014	Relief Valve, 2" FNPT - 20 psi Paragon
8	2	294-010	Washer Lock (Not Shown)
9	2	296-010	Washer Flat (Not Shown)
10	1	509-001	Flange, Delivery CI, RSHA
11	2	293-004	Washer Beveled 1/2" (Not Shown)
12	2	228-074	Capscrew Hex Hd (Not Shown)
13	3	509-001	Flange, Delivery CI, RSHA
14	4	284-000	Nut Hex GR5 1/2" PL
15	4	294-010	WSH LCK GR5 1/2 PL
16	2	526-002	Flange, Gasket, RSHA
17	4	128-025	HHCS 8.8 M12 X 30mm PL
18	4	196-008	WSH, FLT M12 PL
19	4	284-000	Nut Hex GR5 1/2" PL
20	4	294-010	WSH LCK GR5 1/2 PL
21	1	509-031	Flange, Delivery CI, RSHA - P657
22	1	526-036	Flange, RSHA - P657: Gasket
23	1	361-025	Hose Hot Air 4NPTM/Open 36"OAL
24	2	313-025	Clamp HD T-Bolt 4 Hot Air Hose
25	1	535-018	Pipe Nipple 4, King, SS
26	1	508-098	BRKT Remote HA Silencer MTG
<b>BLOWER</b>			
27	1	601-014	Blower, P657
27	1	601-016	Blower, P1057
27	1	601-017	Blower, P858
28	4	128-037	Capscrew Hex Hd (Not Shown)
29	4	194-007	Washer, Lock (Not Shown)
30	1	560-039	Coupler Flange K1350/1410 P657/P858/P1057 (Not Shown)
30	1	560-044	Coupler Flange K1300 P657/P858/P1057 (Not Shown)

Item#	Qty	Part#	Description
<b>MOUNTING</b>			
31	1	508-113	P657; Mounting 2.5 deg Driver Side
31	1	508-114	P657; Mounting 2.5 deg Pass Side
31	1	508-025	P858/P1057; Mounting 2.5 deg Driver Side
31	1	508-061	P858/P1057; Mounting 2.5 deg Pass Side
<b>REMOTE FILTER</b>			
32	1	509-032	P657; Flange Suction Alum
32	1	509-002	P858/P1057; Flange Suction Alum
33	1	291-012	Hose Clamp 4" - 6"
34	1	587-000	P657; Hump Hose 4" x 5"
34	1	508-002	P858/P1057; Hump Hose 5" x 5"
35	1	526-002	Flange, RSHA - P858/P1057; Gasket
35	1	625-002	P657/P858/P1057; Filter Assy S/S PSI/VAC
36	1	508-097	BRKT RSHA AF Direct MTG
37	4	228-075	HHCS Gr5 1/2 X 2-1/4 PI
38	4	284-000	Nut Hex GR5 1/2" PL
39	4	294-010	WSH LCK GR5 1/2 PL
40	8	296-011	WSH FLT GR5 1/2 PL ( TTMA FLG)



**P657**

#621-014 - Side Outlet Service Kit  
#621-016 - Side Outlet Service Kit (Includes 2 Melt Plugs)  
#621-015 - Bottom Outlet Service Kit  
#621-017 - Bottom Outlet Service Kit (Includes 2 Melt Plugs)



**P858 | P1057**

#621-055 - Side Outlet Service Kit  
#621-057 - Side Outlet Service Kit (Includes 2 Melt Plugs)  
#621-056 - Bottom Outlet Service Kit  
#621-058 - Bottom Outlet Service Kit (Includes 2 Melt Plugs)

## Air Filtration System

- Change Air Filter Element Every 6 Months

## Lubrication System

- Change the Lobe Blower Oil Every 6 Months

- P657/P857 - #409-007 - Synthetic Blower Oil

- P1057 - #409-002 - Synthetic Blower Oil

Recommended Blower Oil:

Mobil SHC 630 for P657/P857 & Mobil SHC 627 for P1057

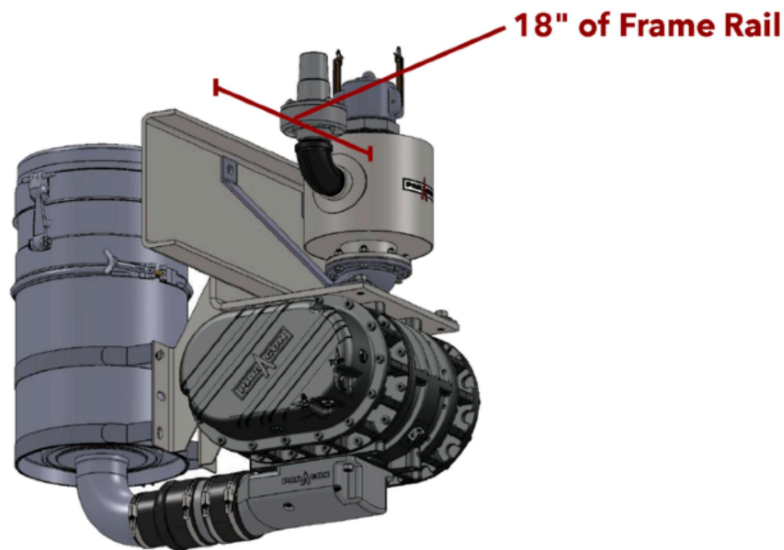
## Melt Plug Inspection

- Inspect Blower for Blown Melt Plugs is Recommended



# VERTICAL SETUP - REQUIRES 18" OF FRAME RAIL ON 1 SIDE

ADDITIONAL KITS AVAILABLE / COMMON KITS LISTED ON THE RIGHT ->



## P657 BLOWER KIT

- (1) 601-014 - BLOWER
- (1) 623-037 MOUNTING BRACKET KIT
- (1) 628-062 (STEEL) OR -097 (SS) SILENCER KIT
- (1) 625-043 - FILTER KIT

## P858 BLOWER KIT

- (1) 601-017 - BLOWER
- (1) 623-041 MOUNTING BRACKET KIT
- (1) 628-024 (STEEL) OR -101 (SS) SILENCER KIT
- (1) 625-022 - FILTER KIT

## P1057 BLOWER KIT

- (1) 601-016 - BLOWER
- (1) 623-041 MOUNTING BRACKET KIT
- (1) 628-024 (STEEL) OR 101 (SS) SILENCER KIT
- (1) 625-023 - FILTER KIT

Approx. Shipping Weight: 630 lbs [285 kg]  
Approx. Shipping Dims: 1 Pallet @ 40Wx48Lx48H

297 Lbs [134 kg] : Bare P657 Weight  
366 Lbs [166 kg] : Bare P858 Weight  
419 Lbs [190 kg] : Bare P1057 Weight



## KEY BLOWER TIPS FOR BETTER OPERATION

- NEVER UNDERSPEED THE TRUCK BLOWER
  - P657 (1000 RPM MIN / DRIVE SHAFT SPEED)
  - P857 (1800 RPM MIN / DRIVE SHAFT SPEED)
  - P1057 (1700 RPM MIN / DRIVE SHAFT SPEED)
- INSPECT THE CHECK VALVE EVERY THREE MONTHS
- SERVICE YOUR TRUCK BLOWER AT THE CORRECT TIME

### General

- Inspect blower oil and change if necessary.
- Inspect Driveline Components

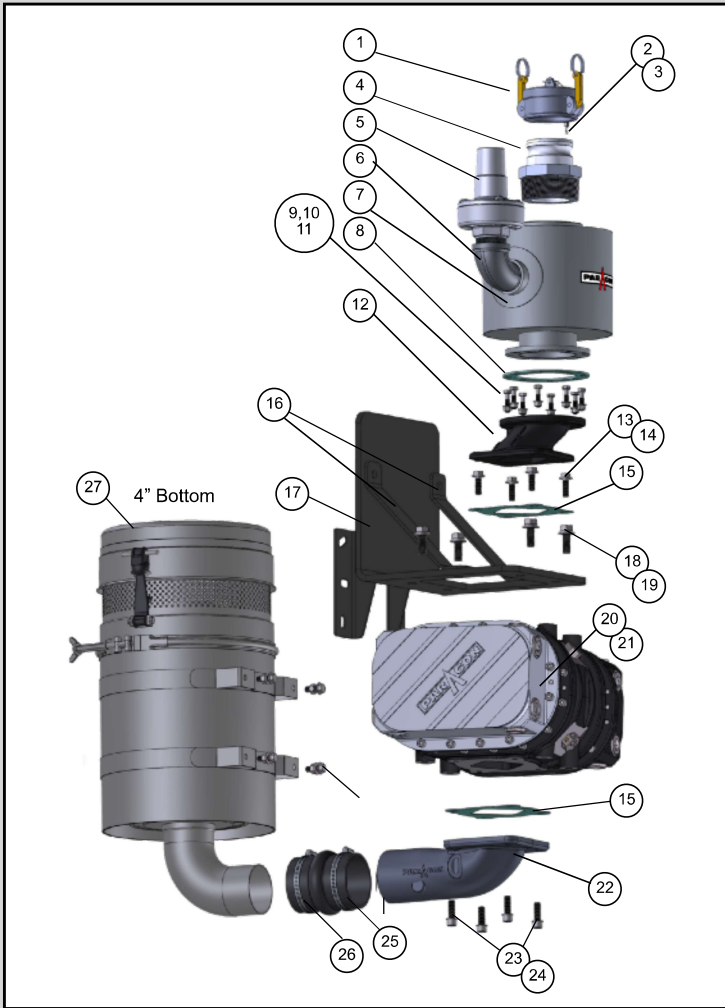
### Air Filtration System

- Change Air Filter Element



P657  
P857  
P1057

# VERTICAL SETUP PARTS BREAKDOWN



Item#	Qty	Part#	Description
<b>SILENCER</b>			
1	1	565-001	Camlock dustcap 3" Aluminum
2	1	582-002	Wire rope
3	2	582-003	Sleeve
4	1	567-002	Camlock 3" male x 4" npt Aluminum
5	1	610-012	Relief Valve, 2" FNPT - 16 psi Paragon
5	1	610-013	Relief Valve, 2" FNPT - 18 psi Paragon
5	1	610-014	Relief Valve, 2" FNPT - 20 psi Paragon
6	1	533-005	Elbow, 2" Street
7	1	563-002	Muffler 4 TTMA x 4 FNPT ST
7	1	563-011	Muffler 4 TTMA x 4 FNPT S/S
8	1	526-011	Gasket, 4 TTMA
9	8	228-105	HHCS 3/8 x 1-1/2 PI
10	8	284-008	Nut Hex Gr5 3/8 PI
11	8	296-008	WSH FLT 3/8 X .812 ZP
12	1	509-033	P657; FLG, Discharge CI VA
12	1		P858/P1057; FLG, Discharge CI VA
13	4	196-008	WSH, FLT M12 PL
14	4	228-065	HHCS Gr5 1/2-13 X 1.25
15	1	526-036	P657; Flange Gasket
15	1	526-002	P858/P1057; Flange Gasket
<b>MOUNTING</b>			
16	2	508-109	P657; VA Bracket Straps
16	2	508-021	P858/P1057; VA Bracket Straps
17	1	508-110	P657; VA Bracket w/ Filter Mount
17	1	508-029	P858/P1057; VA Bracket w/ Filter Mount
<b>BLOWER</b>			
18	4	128-037	HHCS ISO 8.8 M16 -2.0 X 35 PL
19	4	194-007	WSH, LCK M16 PL
20	1	601-014	Blower, P657
20	1	601-016	Blower, P1057
20	1	601-017	Blower, P858
21	1	560-039	Coupler Flange K1350/1410 P657/P858/P1057 (Not Shown)
21	1	560-044	Coupler Flange K1300 P657/P858/P1057 (Not Shown)
<b>FILTER</b>			
22	1	509-034	Flange, VAA - P657: Suction Alum
22	1	509-005	Flange, VAA - P858/P1057: Suction Alum
23	4	228-070	Flange, HA - P657: Capscrew Hex Hd
23	2	124-021	Flange, HAA - P858/P1057: Socket Hex Hd 55mm
24	2	124-025	Flange, HAA - P858/P1057: Socket Hex Hd 110mm
25	1	587-018	P657; Hump Hose - 4"
25	1	587-000	P858/P1057; Hump Hose - 4" x 5"
26	2	291-012	Filter; Hose Clamp 4" - 6"
26	6	291-012	Pre-Cleaner; Hose Clamp 4" - 6"
27	1	625-003	4" Bottom Outlet Filter
27	1	625-006	5" Side Outlet Filter



## Air Filtration System

- Change Air Filter Element Every 6 Months

## Lubrication System

- Change the Lobe Blower Oil Every 6 Months

- P657/P857 - #409-007 - Synthetic Blower Oil

- P1057 - #409-002 - Synthetic Blower Oil

Recommended Blower Oil:

Mobil SHC 630 for P657/P857 & Mobil SHC 627 for P1057

## Melt Plug Inspection

- Inspect Blower for Blown Melt Plugs is Recommended



# How to Size a Paragon Blower

Dry Bulk can be broken down into **four** categories of products and requires different air velocities for conveying.

1. **Pulverants and Powders** Velocity required 2500 - 4000 ft./min.  
Cement  
Flyash  
Hydrated Lime  
Starch  
Flour
2. **Granular - up to 1/32" dia.** Velocity required 4500 - 6000 ft./min.  
Sugar  
Salt, table  
Sand  
Pulverized Limestone
3. **Pebble - 1/32" and up** Velocity required 5000 - 7000 ft./min.  
Plastic Pellets  
Rock Salt  
Dolomite  
Limestone (normally requires 7000+ ft./min.)
4. **Feeds - all sizes** Velocity required 3000 - 4000 ft./min.  
Corn  
Soy Beans  
Rice  
Rice Grits  
Corn Germ  
Corn Meal  
Oats  
Pelletized Feeds
5. **Chart** The diameter of the discharge pipe or hose is needed to determine the CFM (cubic feet per minute) required to unload the product.

**Velocities of Air in Feet Per Minute**

Dia.	Area	2000	3000	4000	5000	6000	7000
Pipe (")	Sq. Ft.	CFM	CFM	CFM	CFM	CFM	CFM
3	0.049	98	147	196	245	294	343
4	0.087	174	261	348	435	522	609
5	0.136	272	408	544	680	816	952
6	0.196	392	588	784	980	1176	1372
8	0.349	798	1047	1396	1745	2094	2443

**Note:** These velocities have been determined by 6 ~ 15 p.s.i. discharge pressure.



PTO Speed RPM	Pressure Performance and Horsepower								Vacuum Performance						
	12 PSIG		16 PSIG		18 PSIG		20 PSIG		12 inHg		15 inHg		17 inHg		
	CFM	HP	CFM	HP	CFM	HP	CFM	HP	CFM	HP	CFM	HP	CFM	HP	
1000	246	19								247	10	222	12		
1100	282	21	265*	28						283	11	258	13		
1200	318	23	301*	31	293*	34				319	12	294	14		
1300	354	25	337	33	329	37	321*	41		355	14	330	17	310*	19
1400	390	27	372	36	365	40	357*	45		390	14	365	17	346*	19
1500	425	29	408	39	400	43	393*	48		426	14	401	18	328*	20
1600	461	31	444	41	436	46	429*	51		462	15	437	19	418*	22
1700	497	33	480	44	472	49	465*	55		498	16	473	20	453*	23
1800	533	35	516	47	508	52	500*	58		534	17	509	22	489*	24
1900	569	37	551	49	544	55	536*	61		569	18	544	23	525*	26
2000	604	40	587	52	579	58	572*	65		605	19	580	24	561*	27



Blower Speed RPM	Pressure Performance and Horsepower								Vacuum Performance					
	12 PSIG		16 PSIG		18 PSIG		20 PSIG		12" of		16" of		17" of	
	CFM	BHP	CFM	BHP	CFM	BHP	CFM	BHP	CFM	BHP	CFM	BHP	CFM	BHP
1800	479	33	462	42	447	50	437	55	493	17	464	21	440	23.29
1900	514	35	497	44	482	52	472	58	528	18	498	22	475	24.59
2000	549	37	532	46	516	55	507	61	563	18	533	23	510	25.88
2100	584	39	566	49	551	58	541	64	597		568	24	545	27.17
2200	618	41	601	51	586	61	576	68	632	20	602	25	579	28.47
2300	653	43	636	53	620	64	611	71	667	21	637	26	614	29.76
2400	688	45	671	56	655	66	645	74	701	22	672	27	649	31.05
2500	722	47	705	58	690	69	680	77	736	23	707	29	683	32.35
2600	757	48	740	60	724	72	715	80	771	24	741	30	718	33.64
2700	792	50	775	63	759	75	750	83	806	25	776	31	753	34.94
2800	826	52	809	65	794	78	784	86	840	26	811	32	787	36.23
2900	861	54	844	67	829	81	819	89	875	27	845	33	822	37.52
3000	896	56	879	70	863	83	854	92	910	28	880	34	857	38.82



Blower Speed RPM	Pressure Performance and Horsepower								Vacuum Performance					
	12 PSIG		16 PSIG		18 PSIG		19 PSIG		12" of		16" of		17" of	
	CFM	BHP	CFM	BHP	CFM	BHP	CFM	BHP	CFM	BHP	CFM	BHP	CFM	BHP
1700	587	42	556	55	543	62	536	66	605	22	565	27	534	31
1800	633	44	602	59	589	66	582	69	651	22	611	27	580	31
1900	679	47	648	62	635	70	628	73	697	23	657	29	626	32
2000	725	49	694	65	681	73	674	77	743	24	703	30	672	35
2100	771	52	740	69	727	77	720	81	789	25	749	32	718	36
2200	817	54	786	72	773	81	766	85	835	27	795	33	764	38
2300	863	57	832	75	819	84	812	89	881	28	841	35	810	39
2400	909	59	878	79	865	88	858	93	927	29	887	36	856	41
2500	955	61	924	82	911	92	904	97	973	30	933	38	902	43
2600	1001	65	970	85	957	96	950	101	1019	32	979	39	948	44
2700	1047	67	1016	89	1003	100	996	105	1065	33	1025	41	994	46
2800	1093	70	1062	92	1049	103	1042	109	1111	34	1071	42	1040	48
2900	1139	72	1108	96	1095	107	1088	113	1157	35	1117	44	1086	50
3000	1185	75	1154	99	1141	111	1134	117	1203	36	1163	45	1132	51