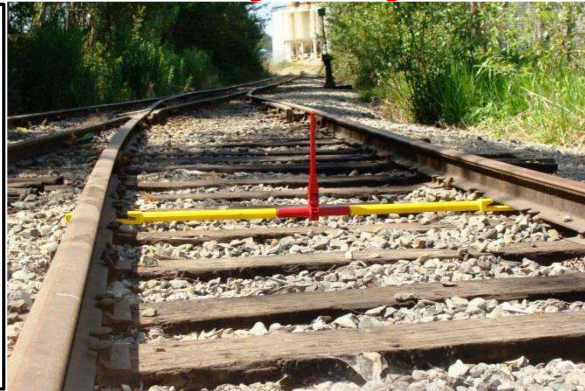
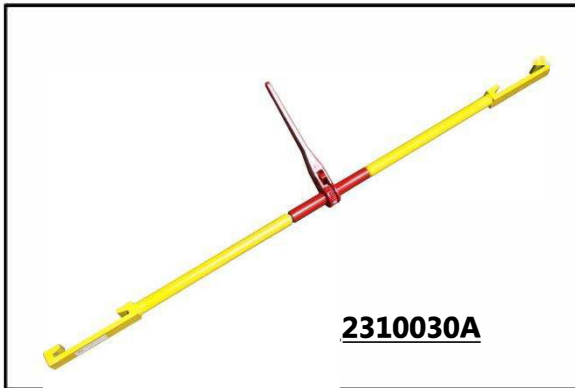




Rail Gauge Expander/Pullers

Part: 2310030A – Regular

2310030B – Heavy Duty



Technical Data:

Make: IPS

2310030A

Weight: 20 lbs.

Dim.: 2" x 2-1/2" x 60"

- Designed to align track from base of rail

2310030B

Weight: 41 lbs.

Dim.: 2" x 5-1/2" x 60"

- Designed to align track from either base or top of rail

Description: Aligning tools designed for correcting wide or tight gauge. Alignment is achieved from the base of the rail (part # 2310030A) or either base or top of the rail (part # 2310030B). A great tool for rail change out applications or restoring gauge quickly and easily in derailment areas and holding gauge during tie renewal programs.

