

Lubrication Fittings Accessories

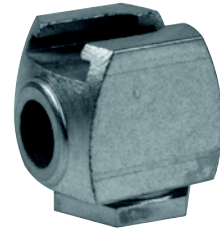


Couplers

Button head couplers are used with standard or giant button head fittings only.

Standard and Giant Button Head Couplers

Product #	Type	Thread	Pressure
42030	Standard Pull-On	7/16"-27 NS-2(f)	10,000 psi
42030-A	Standard Pull-On	1/8" NPTF(f)	10,000 psi
42031-A	Standard Push-On	1/8" NPTF(f)	10,000 psi
304300	Giant Pull-On	7/16"-27 NS-2(f)	15,000 psi
304300-A	Giant Pull-On	1/8" NPTF(f)	15,000 psi
319702	Giant Pull-On	1/4" PTF SAE Short(f)	15,000 psi
304301	Giant Push-On	7/16"-27 NS-2(f)	15,000 psi



42030

Pin type couplers provide quick, positive and leakproof connection with pin type fittings.

Pin Type Couplers

Product #	Thread
VB942	1/8" NPTF(f) w/o wing
50491	1/8" NPTF(m) w/ wing
51185	1/8" NPTF(f) w/ wing



50491

Flush type couplers are used with flush type fittings only.

Flush Type Nozzle Couplers

Product #	Type	Thread
314150*	Midget	1/8" NPTF(f)
2737	Standard	1/8" NPTF(f)



2737

IMPORTANT INFORMATION

* Used with 1877 flush type fitting page 21